

Cynomolgus CDH17 Protein; His Tag

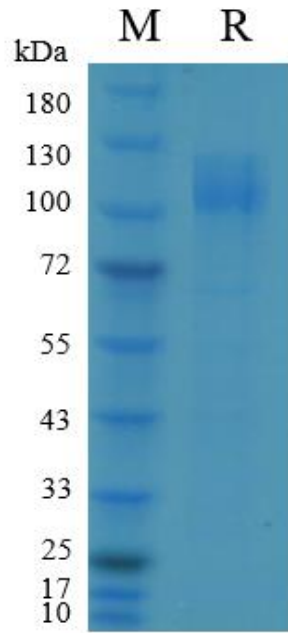
Product Information

Product Name	Cynomolgus CDH17 Protein; His Tag
Storage temp.	Store at $\leq -70^{\circ}\text{C}$, stable for 6 months after receipt. Recommend to aliquot the protein into smaller quantities for optimal storage. Please minimize freeze-thaw cycles.
Catalog# / Size	GM-75417RP-100 / 100 μg GM-75417RP-1000 / 1 mg

Protein Information

Alternative Names	Cadherin-17,HPT-1,LI-cadherin
Source	Cynomolgus CDH17 Protein; His Tag (GM-75417RP) is expressed from human 293 cells (HEK-293). It contains AA Lys30-Thr792 (Accession # A0A2K5X8I8-1). This protein carries a His tag at the C-terminus.
Purity	> 95% as determined by SDS-PAGE
Endotoxin	< 1 EU/ μg , determined by LAL gel clotting assay
Predicted Mol Mass	86.6 KDa
Formulation	Supplied as a 0.2 μm filtered solution of PBS, pH7.4.
Description	Cadherin-17 is a protein that in humans is encoded by the CDH17 gene. This gene is a member of the cadherin superfamily, genes encoding calcium-dependent, membrane-associated glycoproteins. The encoded protein is cadherin-like, consisting of an extracellular region, containing 7 cadherin domains, and a transmembrane region but lacking the conserved cytoplasmic domain. The protein is a component of the gastrointestinal tract and pancreatic ducts, acting as an intestinal proton-dependent peptide transporter in the first step in oral absorption of many medically important peptide-based drugs. The protein may also play a role in the morphological organization of liver and intestine.

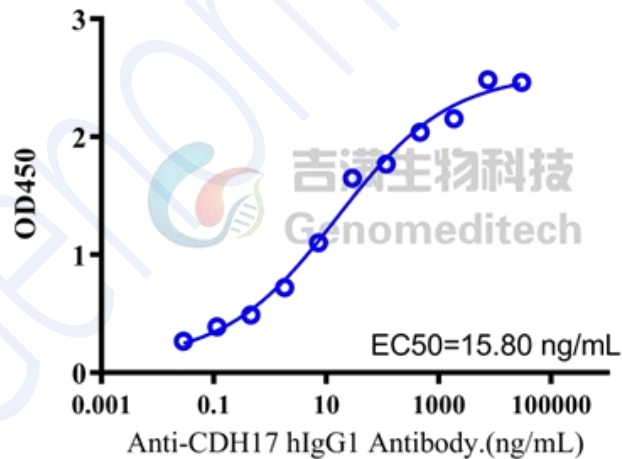
SDS-PAGE



This protein on SDS-PAGE under reducing (R) condition. The gel was stained overnight with Coomassie Blue. The purity of the protein is greater than 95%.

Bioactivity-ELISA

Cynomolgus CDH17 Protein; His Tag ELISA
0.5 μ g Cynomolgus CDH17 Protein; His Tag of per well



Cynomolgus CDH17 Protein; His Tag (Catalog # GM-75417RP) was immobilized at 5 μ g/ml (100 μ L/well). Increasing concentrations of Anti-CDH17 hIgG1 Antibody (BI-905711) (Catalog # GM-52672AB) were added.